



**Long Activity**  
**Ages 9–12**  
**45–60 minutes**

## **World of Braille Activity**

---

### **Description**

Participants will learn about braille and can complete one or more braille-related activities.

If possible, staff should set up display of braille books from the library or branch's collection. Braille and printbraille materials can be ordered from the [Centre for Equitable Library Access \(CELA\)](#).

Note: This activity has several handouts to choose from. If you want to save paper, you can do the Decoding Braille Riddles and Around the World activities as a group using a screen instead of printing handouts for all participants.

### **Number of participants**

For any number of participants

### **Space considerations**

An indoor space with room for children to do a paper-and-pen activity

### **Competencies**

- Letter recognition
- Logic and sequencing
- Mathematics
- Problem solving
- Spatial relationships
- Understanding shapes

### **Materials**

- Crayons, markers or pencil crayons
- Any of the braille cell alphabet handouts
  - Simulated Braille Alphabet with Numbers

- Simulated Braille Cell Alphabet
  - Tactile Braille Cell Alphabet
- Tactile elements that can fit in the braille cell circles, like stickers (e.g., jewel/bead stickers), playdough, clay or glue
- Computer or laptop with access to a projector or computer-display screen
- Microphone
- Any of the braille-related activity worksheets (recommended order)
  - Create Your Own Braille Alphabet
  - Around the World Braille Activity
  - Decoding Braille Riddles
  - Create a Braille Message

## Preparation

- Set up screen and projector (optional).
- Distribute writing utensils and worksheets.
  - We recommend handing out the worksheets after explaining the alphabet braille cells.

## Implementation

1. Start the World of Braille PowerPoint presentation.
2. Click on the “cnib-beyondprint” link on the second slide to explain what braille is and how it works.
3. Explain the following:
  - Braille cells A to J provide the base for the rest of the alphabet.
  - K to T are the same as A to J, but with the third dot added.
  - U to Z are the same as K to O with the sixth dot added, except for W (which is J with an added sixth dot).
4. Follow the presentation and conduct any of the activities.

Option to adapt to a wider audience: Can do activities together as a group. Additionally, there will be a braille handout with empty cells available for kids to create their own messages, spell out their names, etc.

## Accessibility considerations

- Provide tactile stickers or tactile elements that can fit inside the braille cell circles
- Consider braille slates/templates that can be 3D printed from the Internet
- Use PowerPoint presentation (and project on screen if possible)
- Optional: use microphone

## **Book suggestions**

(available in braille from CELA)

*Safiyyah's War* by Hiba Noor Khan

*Tasty: A History of Yummy Experiments* by Victoria Grace Elliott

*Good Food, Bad Waste: Let's Eat for the Planet* by Erin Silver and Suharu Ogawa

## **Download links**

### **PowerPoint presentation**

[World of Braille PowerPoint presentation](#)

### **Worksheets**

[World of Braille Worksheet—Create Alphabet Braille Cells](#) (recommended print)

[World of Braille Worksheet—Create Your Own Message](#) (optional print)

[World of Braille Worksheet—Decoding Braille Riddles + Solution](#) (optional print)

[World of Braille Worksheet—Around the World + Solution](#) (optional print)

### **Braille cell alphabet handouts (optional printouts)**

[World of Braille—Numbered Braille Cell Alphabet](#)

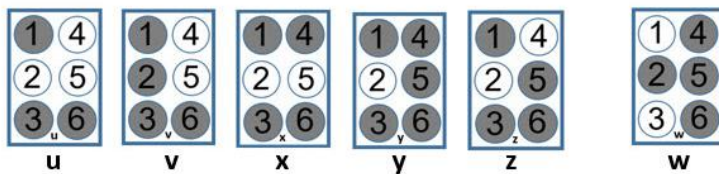
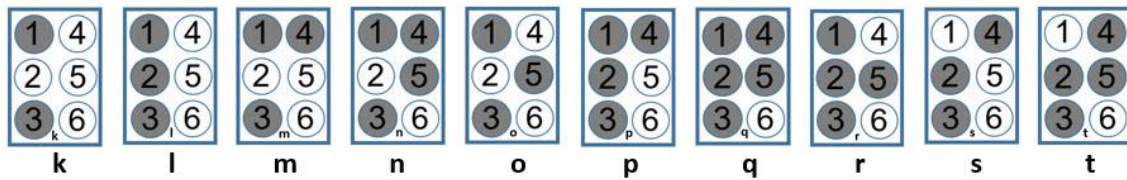
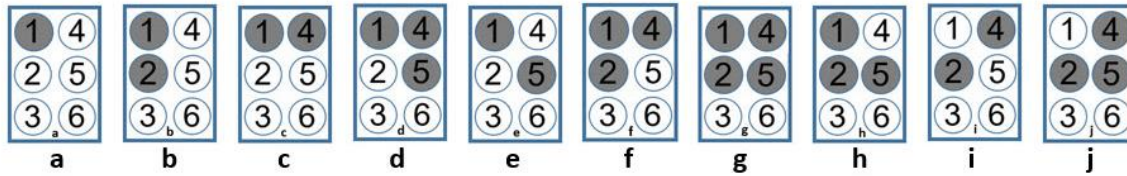
[World of Braille—Simulated Braille Cell Alphabet](#)

[World of Braille—Tactile Braille Cell Alphabet](#)

# Images

## SIMULATED BRAILLE ALPHABET WITH NUMBERED DOTS

Each dot position in a braille cell has a number. Dot one is in the top left. The letter c is represented by dots 1 and 4.



Braille Cell	Braille Pattern
	A to J – 1 <sup>st</sup> row: the base letters
	K to T – 2 <sup>nd</sup> row: A to J + dot 3
	U to Z – 3 <sup>rd</sup> row: K to T + dot 6
	W – J + dot 6